



○ J7 Mall, Margalla View Housing Scheme,
D-17 Main Commercial, Islamabad.

✉ info@j7one.com
🌐 www.j7one.com
📱 j7-One Mall

Disclaimer:
J7-One is constantly seeking ways to improve the specification and design of the project and the modification take place continually. While all reasonable care has been taken in preparing these architectural renderings, illustrations, pictures, photographs and other graphical representation portrayed in this brochure, they are artistic impressions and may differ in some detail from the actual.



Indoor Shopping Mall

D-17, ISLAMABAD
www.j7one.com





Celebrate the
beauty of
nature

Islamabad is famous for its beauty, atmosphere and geographical position.
Combining a rich history, the confluence of many a civilization and temperate climate, Islamabad - the capital city of Pakistan

J7-one mall has been designed to become the iconic shopping destination, located at the heart of Main Markaz, Margalla View Housing Society D-17 Islamabad. Located at the supreme location of Markaz D-17 adjacent to 13 story apartment building. It is six story commercial buildings having marvelous architecture design very much distinctive to other building in surroundings.. Its aim is to hold the widest range, the trendiest and the most looked for brands under one roof. J7-one propels the shopping understanding with its convenient circulation methods to unprecedented levels. Multinational offices, call centers, software houses, kids' areas, medical clinics, beauty salons, day care centre and other corporate activities are all planned to be set on two dedicated floors. J7-one embraces a food court which is an architectural masterpiece, joining tasteful restaurants and regional chains. High end elevators and lifts are meant for the ease and wellbeing of customers hoisting them back and forth from ground floor to food court and other way around.

No doubt J7-one mall is a showpiece in itself due to its delicacy and uniqueness.





JINNAH CONSTRUCTION CO.

Our Completed & ongoing Projects



J7-MALL D-17, ISLAMABAD



PINE VILLAS PHASE-1 D-17, ISLAMABAD



PINE VILLAS PHASE-2 D-17, ISLAMABAD

Jinnah Construction Co. was started to cater the increasing demand of quality residential and commercial properties in Islamabad and Rawalpindi region. The company has scaled heights of success and customer satisfaction in all its endeavors. We further hope to develop and provide more beautiful and tranquil spaces which can serve the needs of our customers and offer more sustainable areas.

Beginning in 2007, Jinnah Construction Co. has over three decades of experience in the field of construction and development. We continue a commitment to excellence by striving for quality in every job regardless of size, budget or time line. We still maintain the same foundation of integrity, trust and mutual respect that has made the business an ever-expanding success, and one of the premier developers in the region. We live where we work and take immeasurable pride in the results we see every day.

About Jinnah Construction

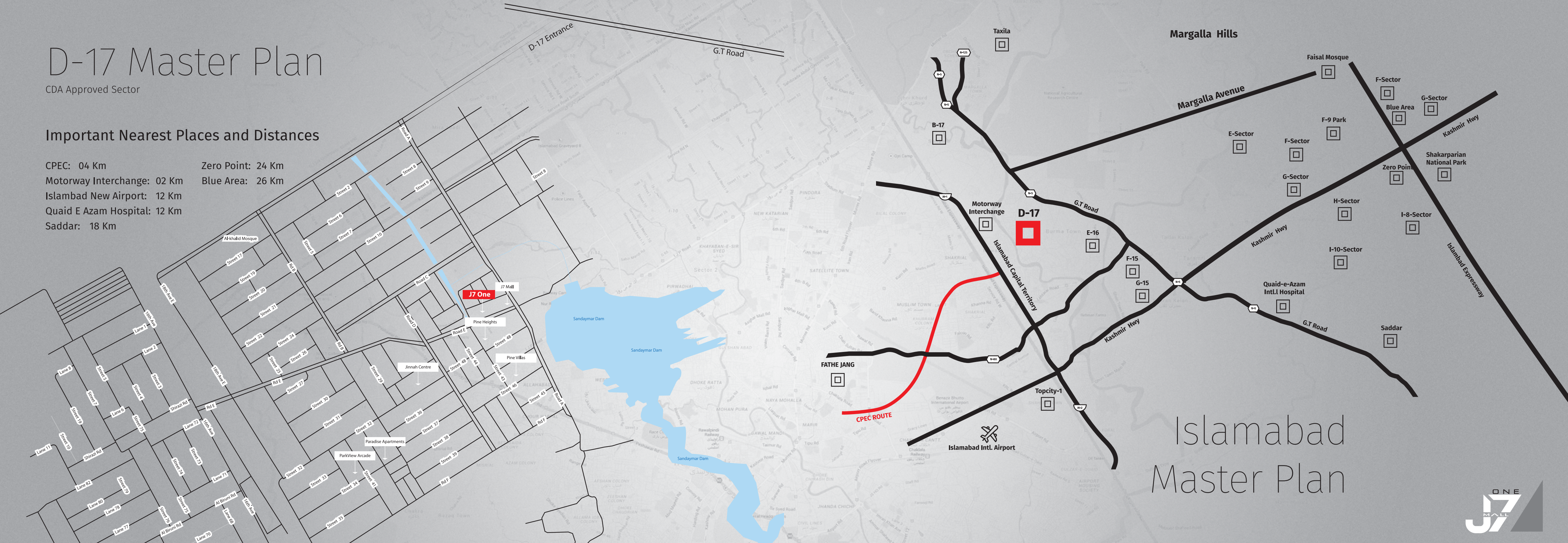


D-17 Master Plan

CDA Approved Sector

Important Nearest Places and Distances

- CPEC: 04 Km
- Motorway Interchange: 02 Km
- Islambad New Airport: 12 Km
- Quaid E Azam Hospital: 12 Km
- Saddar: 18 Km
- Zero Point: 24 Km
- Blue Area: 26 Km



Islamabad Master Plan





About Location

Margalla View Housing Society (MVHS) is a housing project of M/S Twin City Housing (pvt) Ltd, located at Islamabad Zone 2 Sector D-17 adjacent to Sandaymar Dam near Margalla Hills Terrain with access from GT road and Motorway M-4 Sungjani/ AWT interchange. The Society will be accessible from under-construction Margalla Avenue after that the distance from D-17 to F-10 will be about a 15 minutes drive. Society is just 4km away from CPEC Interchange. While strategically making it one of the ideally located society in zone -2 of Islamabad. The Society is fully developed and ready for construction with more than 1000 houses built where families are living and more construction is going on.

Society Features:

Margalla View Housing Scheme (MVHS) was approved in 1995. All NOC's are clear from CDA and other relevant authorities and the area consists of 2018 Kanals of land where 1118 residential plots were planned and remaining area was reserved for parks, schools, mosques and commercial area.

Facilities:

Margalla View Housing Scheme (MVHS) has all basic facilities like water, sewerage, gas, electricity etc available and it is worth living at an affordable cost. It has imported state-of-the-art water filtration plant for the supply of pure filtered water to the residents of Margalla View Society.

Markaz of society is equipped with well known banks, cash and carries, medical stores, bakeries, national brands, high level educational institutes and all other necessary immenities.



Luxury Brands in the J7-ONE





The Amenities

Comfortable Escalators , lifts and stairs

Exceptional and Gorgeous Finishes

24/7 Power Backup

24/7 Security/CCTV Surveillance

High End Construction Materials

Three Sides Corner Building

Earth Quake Resistance Structure up to 10.0 Magnitude

Wide Parking on Three Sides of Mall

Shopkeepers and Visitors Lavish Toilets on Each Floor

Free Wifi at Food Court

Unique and Elegant Exterior Design

Dedicated Smoking Areas

Roof Top Lounges and Terraces

Fire Alarms and Fire Extinguishers at Each Floor

Monthly Event Programs

Food Court with Top of the Line Food Brands

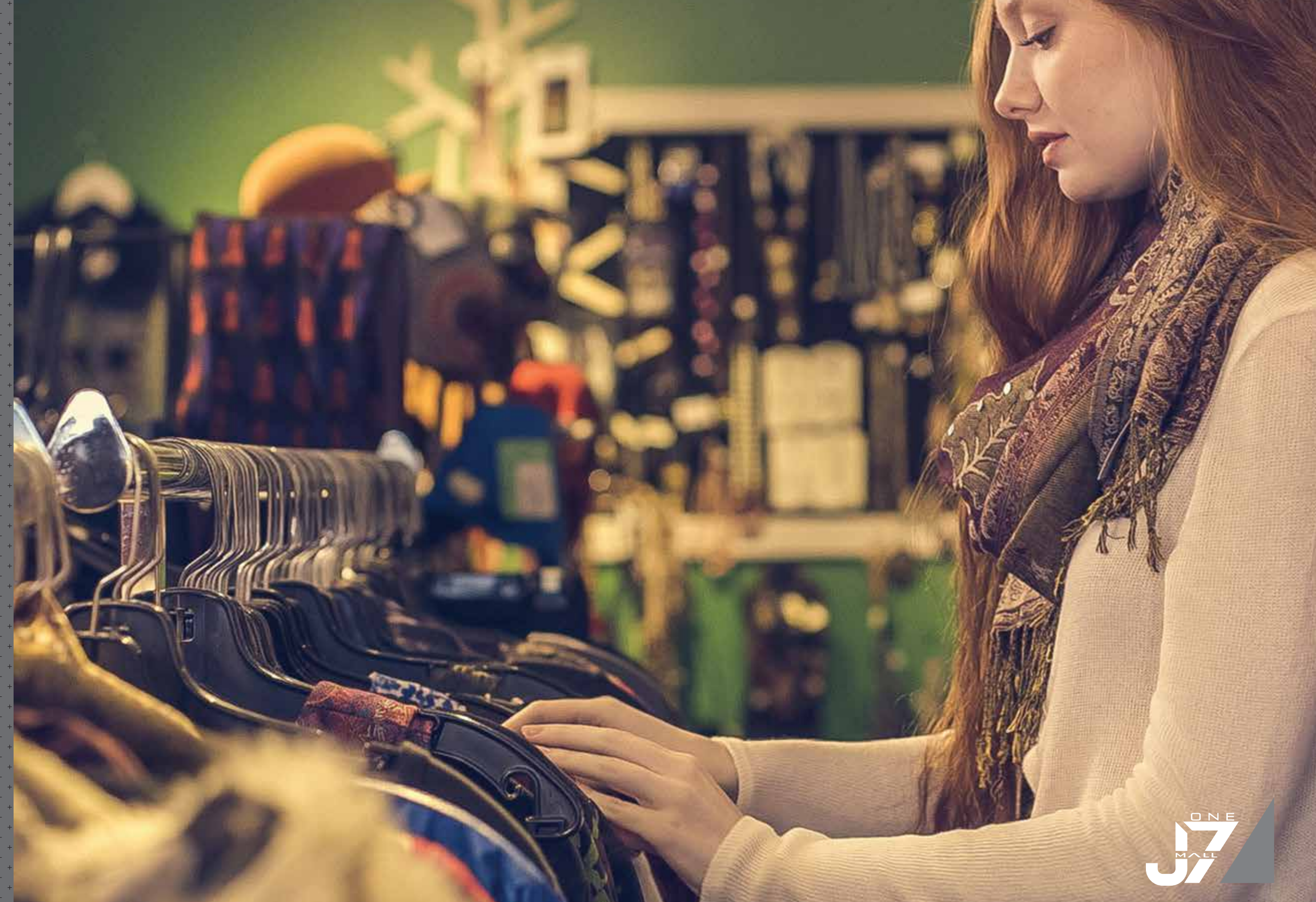
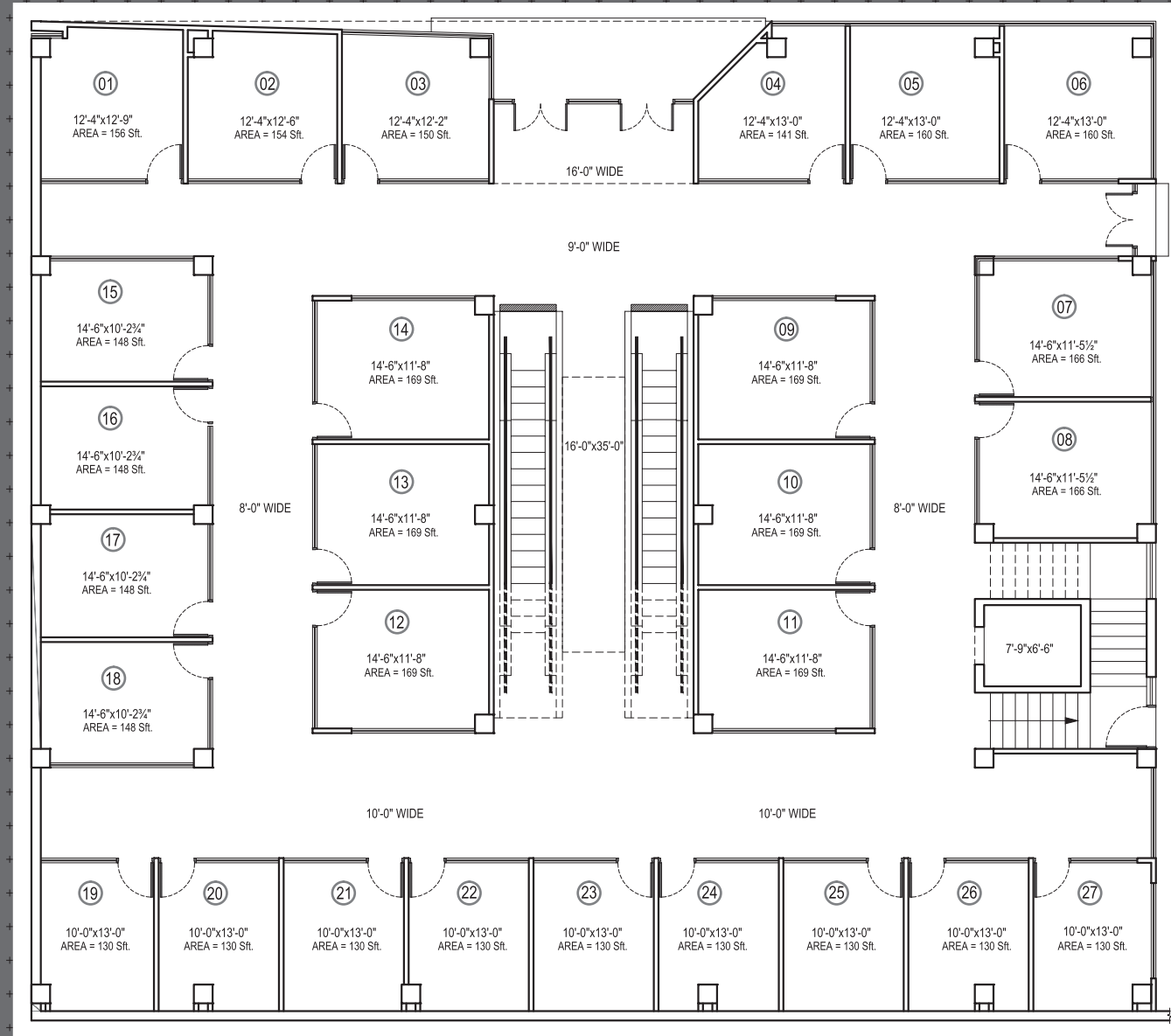
Luxuriant Granite and Tiles Flooring

Wide, Well Lighted and Ventilated Interior

Elegant and Modern Interior Designs

Double Height Wide Glass Door Entrances

Lake View from Roof Top



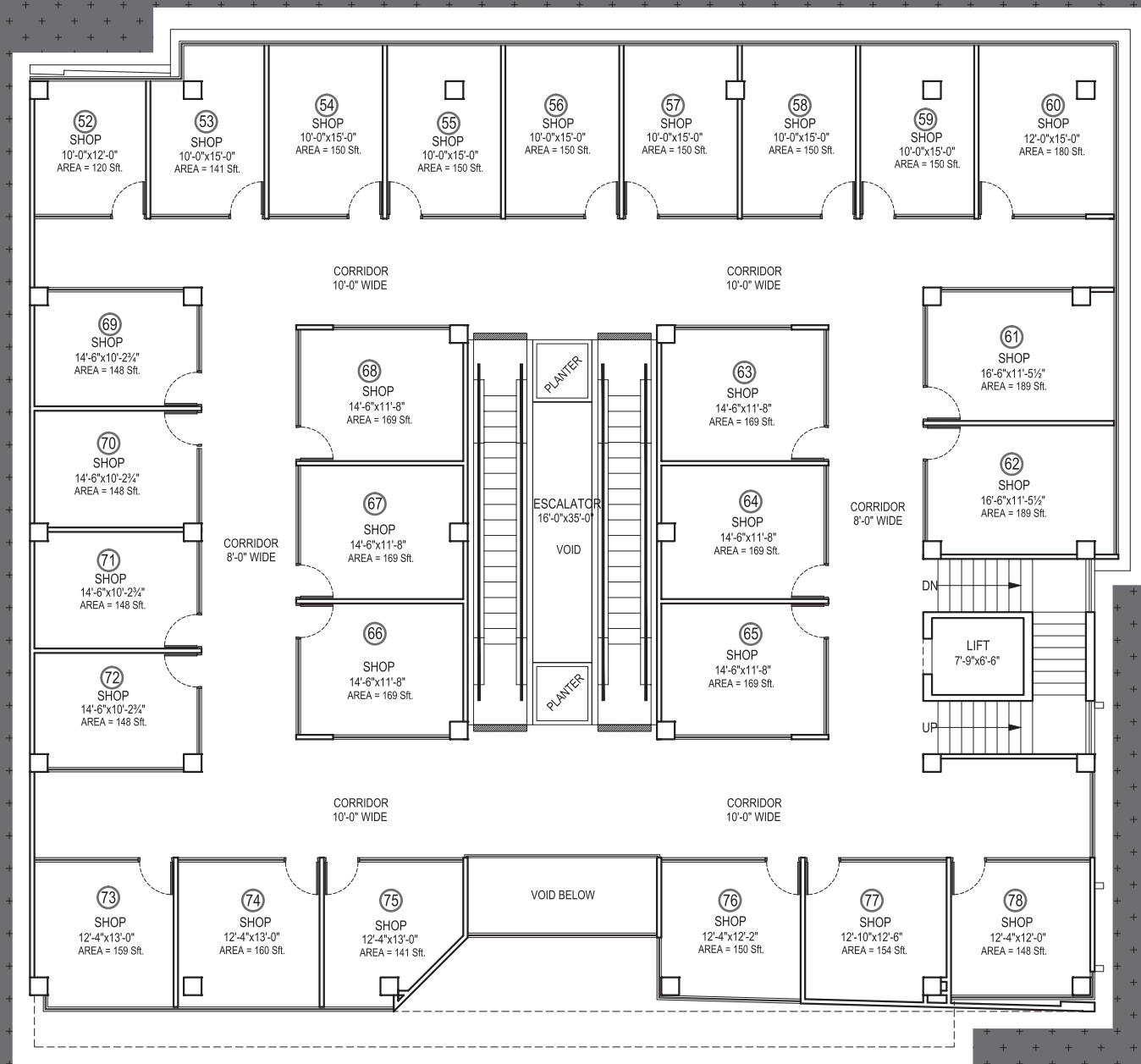
Ground Floor Level One



Garments/Cloth Store | Branded Outlets | Banks





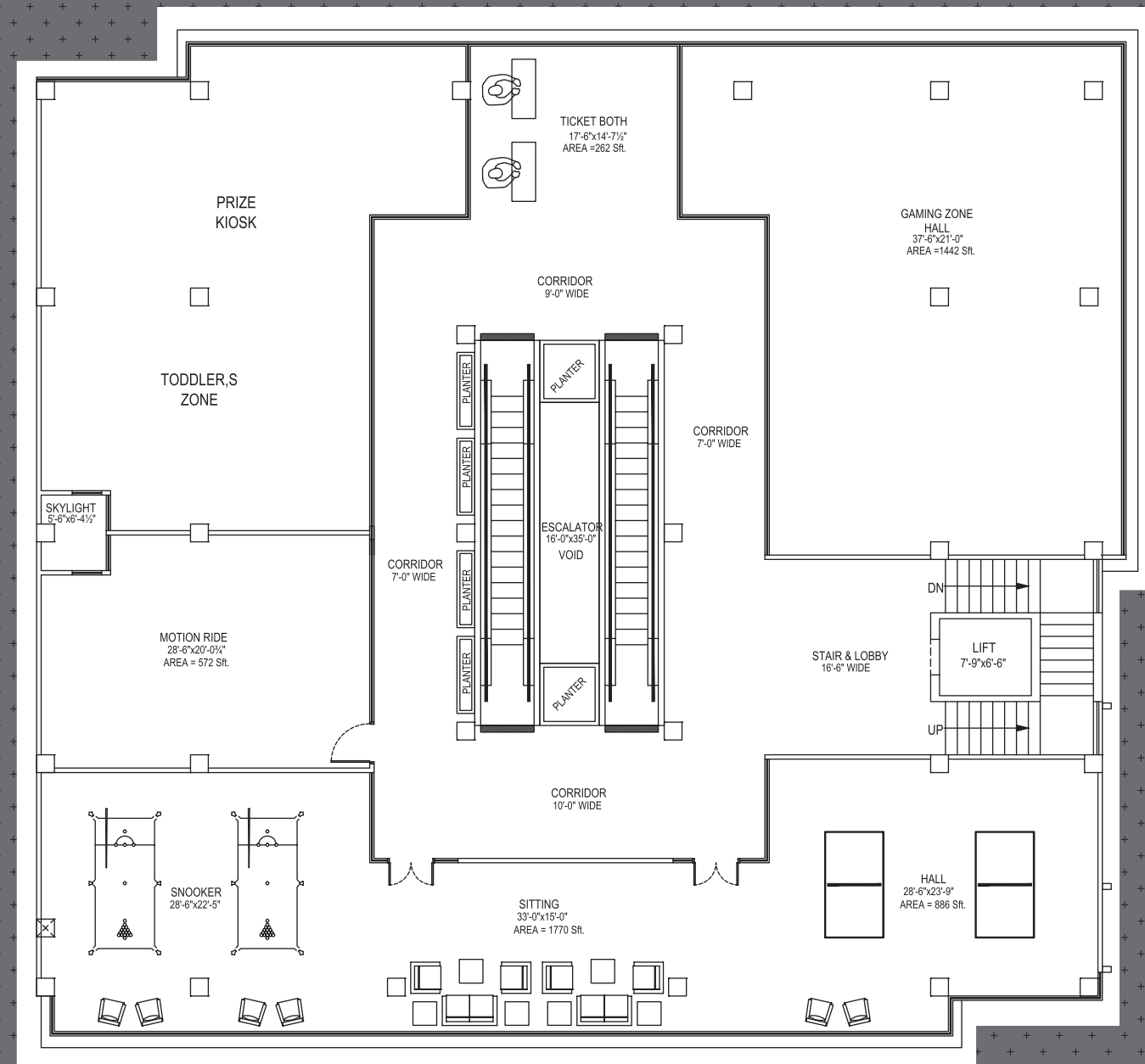


Mezzanine Floor



Grocery Store | Sports Shop | Jewellery Store



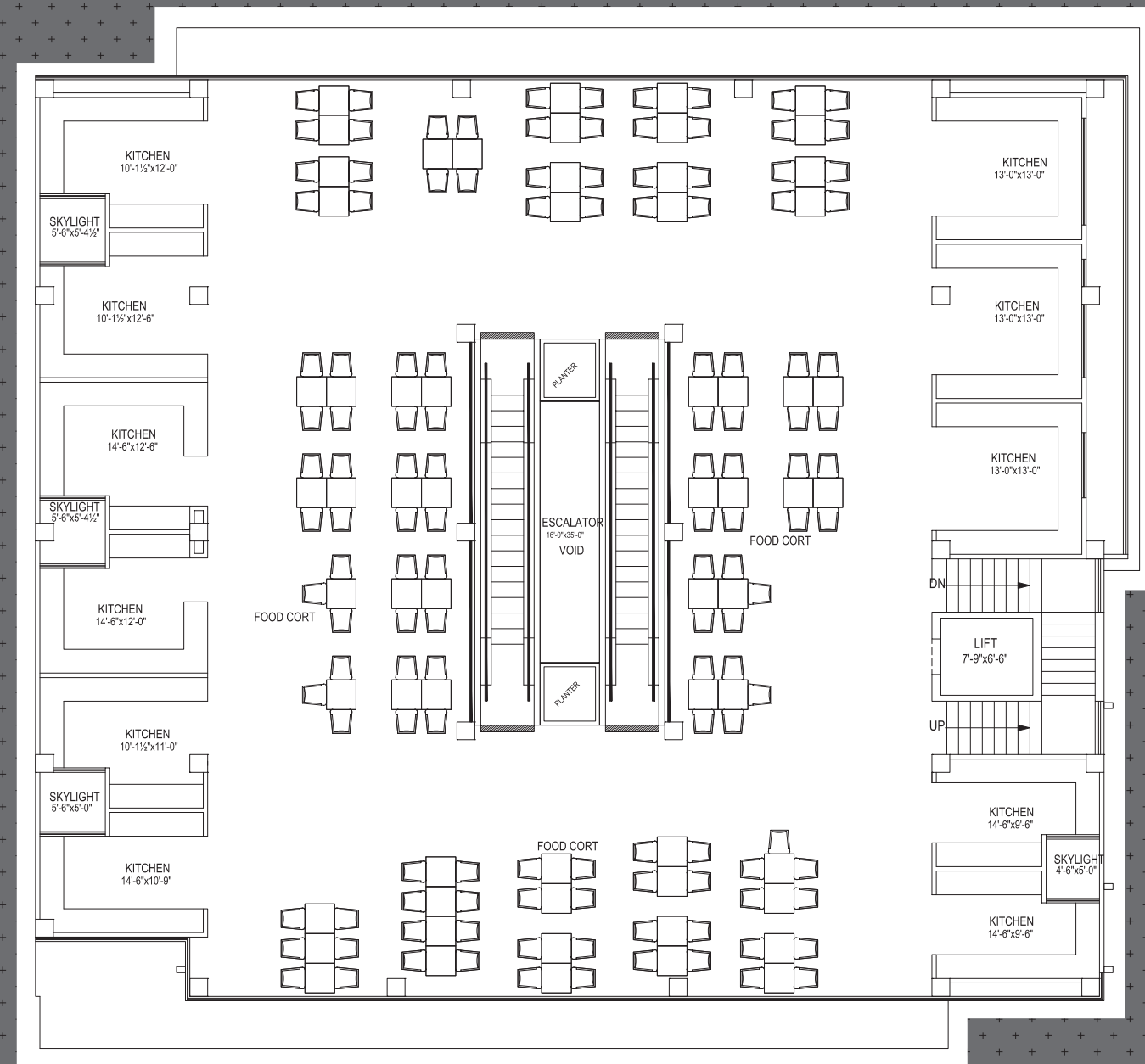


Second Floor



Kids Gaming Zone | Doctors Clinic | Education Centers | Beauty Saloon





Third Floor



Food Court



Roof Top Extravaganza



Our Team

